

HIGHWAY 3 TWINNING PROJECT UPDATE: TABER TO BURDETT

October 21, 2024

[PROJECT OVERVIEW](#) | [OBJECTIVE](#) | [HIGHWAY 3 GROUNDBREAKING CEREMONY](#) | [FAST FACTS](#) | [CONSTRUCTION PROGRESS](#) | [CURRENT WORKS](#) | [PROGRESS PHOTOS](#) | [1-MONTH LOOK AHEAD](#) | [TRAFFIC IMPACTS](#)

PROJECT OVERVIEW

OBJECTIVE

The twinning of Highway 3 will expand the highway's capacity, enhance safety, accommodate future growth, support economic development in Southern Alberta, and increase the efficient movement of goods and people.

Work on this section of the highway involves twinning a 54 km stretch from Taber to Burdett including building an 8 km, new four-lane divided highway bypassing Grassy Lake. It includes:

- 11 bridge structures
- Intersection improvements
 - Acceleration/deceleration lanes
 - Intersection widening
- 2 rest area pullouts – westbound and eastbound
- 10 service roads

- 1 bulk water fill station relocation



HIGHWAY 3 GROUNDBREAKING CEREMONY

On May 31, 2024, the Province of Alberta celebrated the commencement of the Highway 3 twinning project with a groundbreaking ceremony. This event marked the beginning of the long awaited project, which is the first phase of a larger plan to twin the highway from Medicine Hat to the B.C. border.

FAST FACTS

- 2,813,400 cubic meters of grading work
- 1,044,300 tonnes of granular base
- 475,000 tonnes of asphalt concrete pavement
- 802 new signs
- 38 km of fencing
- 30 streetlight installation

This project is anticipated to be completed in Fall, 2026.

CONSTRUCTION PROGRESS

CURRENT WORKS

To view the exact locations related to this project, please visit the [Highway 3 Twinning webpage](#).

- Topsoil stripping complete from Taber - RR 152, and RR 150 – RR 140
- Subgrade has been built from Taber – RR 153, and RR 150 - 143

PROGRESS PHOTOS

- Removal of field approaches along the highway from Taber – RR 145
- Gravel completed from Taber - RR 161
- Paving base lift completed from RR 163 - 161
- Fiber Optic relocations complete from Taber to Grassy Lake
- ATCO Pipeline lowering at RR 153 and 154
- Fortis moving Power poles from Taber to Burdett
- SMRID pipeline casings are ongoing



1-MONTH LOOK AHEAD

- Continue building subgrade east from RR 143 - RR 140
- Topsoil placement following subgrade build
- Detouring traffic east of Taber to allow for construction of new SMRID (St. Mary River Irrigation District) canal bridge-sized culverts
- Main line culvert installations from RR 163 – RR 155
- Intersection/radius work RR 155, 143
- Gravel placement to continue from RR 161 - RR 155
- Paving to continue from Taber - RR 155
- Turnout relocations South of Grassy Lake



TRAFFIC IMPACTS

- Expect road closures for RR 155, 143 in the coming weeks for intersection widening.
- Speed reductions to 80 and 50 km/hr along Highway 3 from Taber to RR 154 in the next month while paving and gravel work occurs at RR intersections.
- Gravel trucks turning on and off the highway while gravel and paving work is ongoing.
- Detour east of Taber is expected to be in effect November 15th.

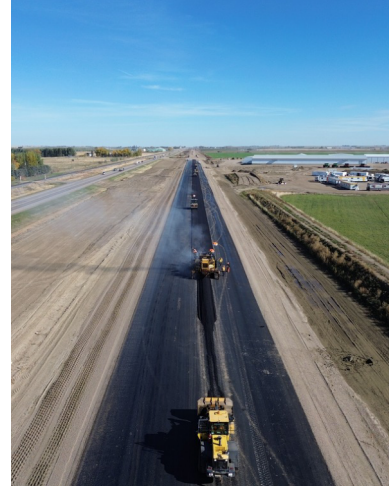


Photo Credits: Ledcor Highways



Thank you for your interest in the Highway 3 Twinning Project. For more information, please contact us at hw3twinning@ledcor.com or visit the [Highway 3 Twinning webpage](#).

To unsubscribe from the email list, please click [here](#).

[Back to the top](#)

Alberta 

Ledcor Highways Ltd.