

HIGHWAY 3 TWINNING PROJECT UPDATE: TABER TO BURDETT

August 7, 2025

[PROJECT OVERVIEW](#) | [OBJECTIVE](#) | [FAST FACTS](#) | [UPCOMING TRAFFIC DETOURS](#) | [TRAFFIC IMPACTS](#) | [SUMMARY OF 2025 PROGRESS](#) | [CURRENT WORKS](#) | [LOOK AHEAD](#) | [JULY 2025 PROGRESS PHOTOS](#) | [SUMMARY OF 2024 PROGRESS](#)

PROJECT OVERVIEW

OBJECTIVE

The twinning of Highway 3 will expand the highway's capacity, enhance safety, accommodate future growth, support economic development in Southern Alberta, and increase the efficient movement of goods and people.

Work on this section of the highway involves twinning a 54 km stretch from Taber to Burdett including building an 8 km, new four-lane divided highway bypassing Grassy Lake. It includes:

- 11 bridge-sized structures
- Intersection improvements
 - Acceleration/deceleration lanes
 - Intersection widening
- 2 rest area pullouts – one westbound and one eastbound
- 10 service roads

- 1 bulk water fill station relocation

FAST FACTS

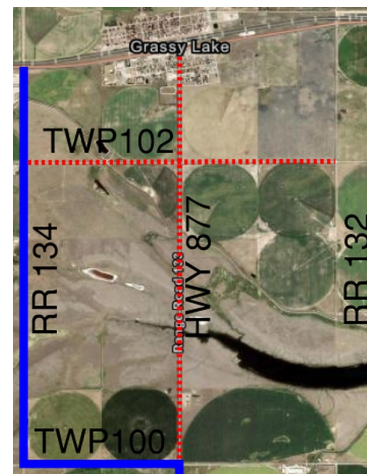
- 2,813,400 cubic meters of grading work
- 1,044,300 tonnes of granular base
- 475,000 tonnes of asphalt concrete pavement
- 802 new signs
- 38 km of fencing
- 30 new streetlight installation

This project is anticipated to be completed in Fall, 2026.

UPCOMING TRAFFIC DETOURS

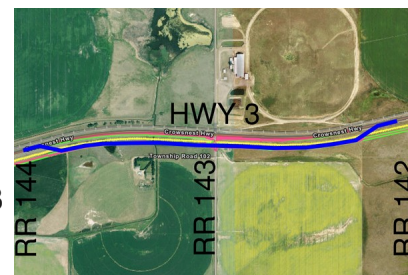
Highway 877 Detour

- Tentatively scheduled from **August 11th to 21st** while grading crews perform major intersection improvements.
- Traffic will be detoured around HWY 877 on TWP 100 and RR 134. TWP 102 between RR 134 and 132 will also be temporarily closed to completed Range Road realignment work.



SMRID Bridge Structure Detour

- Tentatively scheduled from **September 1st to November 31st** while grading crews complete major curve revision and bridge structure work.
- Traffic will be detoured on to the New Highway 3 east of RR 144 to west of RR 142.



TRAFFIC IMPACTS

- Expect Range Road closure and speed reductions at miscellaneous intersections from RR 152 to 141 for steep shoulder drop offs as intersection improvements are ongoing.
- Hwy 877 speed reduction is in place with steel plates on the road and expected to remain in effect until the end of August.

- Gravel hauling has begun, expect speed reductions and trucks turning at intersection from RR 144 to 141.

SUMMARY OF 2025 PROGRESS

For a detailed map of the locations referenced in this email, see the [Hwy 3 Twinning Map](#).

Grading

- Topsoil placement completed from Taber to RR 155
- Field access removals from Taber to Grassy Lake
- Topsoil stripping completed to RR 132
- Final subgrade prep completed from RR 155 to 141
- Topsoil seeding completed from west of RR 163 to east of RR 155

Gravel

- Mainline Gravel Base Course completed from RR 154 to 144

Utilities

- TELUS fiber optic completed
- ATCO High Pressure pipeline abandonment completed
- AltaLink major pole relocation at RR 153 and 122 completed
- Private waterline lowering completed in bypass
- Forty Mile Gas lowerings complete

SMRID

- Bridge sized culvert structures 1-2 and 9-10 completed
- Laterals 3/3A, 8, 9, East Horsefly Main Pipeline completed
- Structure 11 concrete box culvert fabrication completed

Other

- Highway 3 Twinning web page has been completed [click here](#)
- Sawcutting on south side of existing Highway 3 completed
- SMRID bridge structure detour east of Taber completed
- Culvert bores under existing Highway 3 complete at RR 152 intersection

CURRENT WORKS

Grading

- Topsoil placement in various locations
- Topsoil stripping and grading in by-pass ongoing; crews hauling across Hwy 877.
- Grading ongoing from RR 143 to RR 132
- Final subgrade prep, intersection improvements, and culvert installations ongoing from RR 145 moving east.
- Reclamation of Borrow pit is ongoing SE of RR 143

Gravel

- 1st and 2nd lift are ongoing from RR 144 to 141
- Miscellaneous intersection work ongoing from RR 152 to RR 144
- Prime coat oil is ongoing from RR 144 to 141 and at miscellaneous intersection tapers from RR 152 to 144

Utilities

- Fortis moving power poles south of Grassy Lake is ongoing

LOOK AHEAD

- MD of Taber waterline in bypass to begin construction
- Enmax fiber lowering to begin construction at RR 153
- Fortis to complete remaining power relocations
- Altalink to relocate two remaining conflicts in Q4 2025
- Inter Pipeline to start work to start Q4 2025
- Continue finishing subgrade prep from RR 142 heading East
- Finishing gravel base course from RR 154 to 142
- Paving crews expected to be on site by end of August. Starting between RR 144 and 142 Bridge Structure 7-8 detour.
- Completing Highway 877 intersection improvements
- Opening SMRID Bridge Structure detour between RR 144 and 142

JULY 2025 PROGRESS PHOTOS



Grading Crews Completing Median Ditch Cut South of Grassy Lake



Grading Crews Final Subgrade Prepping Between RR 144 and 143



Grading Crews Completing Borrow Reclamation SE of RR 143



Culvert Crews Boring Underneath Existing Highway at RR 152



Guard Rail Crew Installing High Tension Cable Barrier Between Taber and RR 163



Gravel Crews Applying Prime Coat to Final Lift of Gravel Between RR 154 and 155



Gravel Crews Hauling and Placing Gravel Between RR 153 and 152

SUMMARY OF 2024 PROGRESS

For a detailed map of the locations referenced in this email, see the [Hwy 3 Twinning Map](#).

Highway Construction

- Topsoil stripping complete from Taber to RR 151, and RR 150 to RR 140
- Subgrade complete from Taber to RR 153, RR 150 to 143, and RR 142 to 140
- Removal of field approaches complete from Taber to RR 154
- Gravel complete from Taber to RR 155
- Paving base lift and first top lift complete from RR 163 to 155
- Gravel and asphalt aggregate crushing complete
- Culvert bores under existing highway complete at RR 163, 162, 161, 155, and south of Burdett
- Detour 1 between Taber and RR 163 complete

Utilities

- Fiber Optic relocations complete from Taber to Grassy Lake
- ATCO pipeline lowerings complete
- Forty Mile Gas pipeline lowerings 90% complete
- Fortis power pole relocations complete between Taber and Grassy Lake

St. Mary River Irrigation District (SMRID)

- Lateral 5-4 pipeline cap complete
- Lateral 7 East Horsefly casing complete
- Lateral 17 culvert and pipeline casing complete
- Lateral 18 casing complete
- Lateral 20 pipeline cut back and casing complete
- Private pipeline casing complete
- Structure 1-2 partially complete with the culverts installed under the new EB lanes
- Structures 3, 4, 5, and 6 complete
- Structure 7-8 partially complete with the culverts installed under the new EB lanes



To subscribe to the email list, please click [here](#).

Thank you for your interest in the Highway 3 Twinning Project. For more information, please contact us at hwy3twinning@ledcor.com or visit the [Highway 3 Twinning webpage](#).

To unsubscribe from the email list, please click [here](#).

[Back to the top](#)



Ledcor Highways Ltd.