

HIGHWAY 3 TWINNING PROJECT UPDATE: TABER TO BURDETT

October 1, 2025

[PROJECT OVERVIEW](#) | [OBJECTIVE](#) | [FAST FACTS](#) | [TRAFFIC DETOURS](#) | [TRAFFIC IMPACTS](#) | [SUMMARY OF 2025 PROGRESS](#) | [CURRENT WORKS](#) | [LOOK AHEAD](#) | [SEPTEMBER 2025 PROGRESS PHOTOS](#) | [SUMMARY OF 2024 PROGRESS](#)

PROJECT OVERVIEW

OBJECTIVE

The twinning of Highway 3 will expand the highway's capacity, enhance safety, accommodate future growth, support economic development in Southern Alberta, and increase the efficient movement of goods and people.

Work on this section of the highway involves twinning a 54 km stretch from Taber to Burdett including building an 8 km, new four-lane divided highway bypassing Grassy Lake. It includes:

- 11 bridge-sized structures
- Intersection improvements
 - Acceleration/deceleration lanes
 - Intersection widening
- 2 rest area pullouts – one westbound and one eastbound
- 10 service roads
- 1 bulk water fill station relocation

FAST FACTS

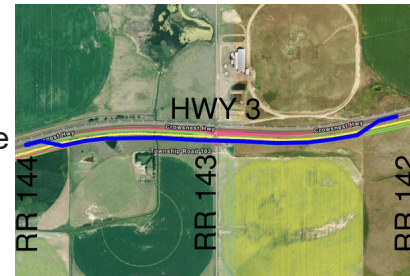
- 2,813,400 cubic meters of grading work
- 1,044,300 tonnes of granular base
- 475,000 tonnes of asphalt concrete pavement
- 802 new signs
- 38 km of fencing
- 30 new streetlight installation

This project is anticipated to be completed in Fall, 2026.

TRAFFIC DETOURS

Curve Realignment Detour

- Detour was opened on **September 10th** and is expected to be in place until **November 31st** while grading crews complete major curve revision and bridge sized culvert work.
- Traffic will be detoured on to the new Highway 3 alignment between RR 144 and RR 142.



TRAFFIC IMPACTS

- Expect Range Road closure and speed reductions at miscellaneous intersections from RR 144 to 140 due to steep shoulder drop offs as intersection improvements are ongoing.
- Hwy 877 speed reduction will remain in place until the end of October until gravel and paving work has been complete.
- Gravel and paving haul are ongoing, expect speed reductions and trucks turning at RR 135 and HWY 877 intersections.
- RR 132 will remain closed until summer 2026.

SUMMARY OF 2025 PROGRESS

For a detailed map of the locations referenced in this email, see the [Hwy 3 Twinning Map](#).

Grading

- Topsoil placement and seeding completed from RR 163 to RR 155
- Field access removals completed from Taber to Grassy Lake
- Topsoil stripping completed from Taber to RR 130 and RR 124 to 122
- Final subgrade prep completed from RR 154 to RR 132

- Borrow reclamation completed east of RR 143
- HWY 877 intersection completed

Gravel

- Mainline Gravel Base Course completed from RR 154 to RR 135

Paving

- Detour between RR 144 and 142 completed
- 1st and 2nd lift paving completed from RR 154 to RR 142

Utilities

- ATCO High Pressure pipeline abandonment completed
- AltaLink major pole relocation at RR 153 and 122 completed
- Private waterline lowering completed in bypass
- Forty Mile Gas lowering's completed
- Fortis power pole relocation at HWY 877 and RR 150 intersection completed
- Enmax fiber lowering completed at RR 153
- IPL wall thickness completed west of RR 154

SMRID

- Bridge sized culvert structures 1-2 and 9-10 completed
- Laterals 3/3A, 8, 9, and East Horsefly Main Pipeline completed
- Structure 11 concrete box culvert fabrication completed

Other

- Highway 3 Twinning web page has been completed [click here](#)
- Saw cutting on south side of existing Highway 3 completed
- SMRID bridge-sized culvert structure detour east of Taber completed
- Culvert bores under existing Highway 3 complete at RR 152 intersection

CURRENT WORKS

Grading

- Topsoil placement in various locations
- Topsoil stripping from RR 131 moving east and 122 moving east.
- Grading ongoing from RR 131 moving east and from RR 124 to 122 moving east
- Final subgrade prep, intersection improvements, and culvert installations ongoing from RR 132 moving east.
- Curve realignment work on existing Highway 3 is ongoing from RR 144 to 142.

Gravel

- 1st lift of base is ongoing from HWY 877 to RR 132
- Miscellaneous intersection work ongoing from RR 135 to HWY 877.

- Prime coat oil is ongoing from RR 135 to HWY 877

Paving

- Paving crews are working from RR 142 moving east
- Miscellaneous intersection work ongoing from RR 145 to 140

Utilities

- Miscellaneous Fortis pole relocations
- Miscellaneous TELUS relocations

LOOK AHEAD

- MD of Taber waterline in bypass to begin construction
- AltaLink to relocate two conflicts in Q4 2025
- Miscellaneous TELUS work at RR 155, 150, 151, and 132 to be completed
- Continue subgrade work from RR 131 moving east and curve realignment from RR 143 to 142.
- Finishing gravel base course from HWY 877 moving east
- Paving 1st and 2nd lift from RR 140 moving east
- SMRID Structures 7-8 and 11 to begin work October 15th

SEPTEMBER 2025 PROGRESS PHOTOS



Paving Crews Placing First lift of S3 Between RR 151 and 152 Looking East



Asphalt Milling Crews Milling Existing Highway 3 Curve Realignment Between RR 144 and 143 Looking West



Traffic Detour Between RR 144 and 142 Looking West



Base Crews Windrowing 2nd Lift of Gravel West of RR 135 Looking East



Grading Crews Installing Twin Centerline Culverts on Existing Highway 3 Curve Realignment Between RR 144 and 143 Looking West



Grading Crews Completing Median Ditch Cut Between RR 131 and RR 130 Looking East

Photo Credits: Ledcor Highways Ltd.

SUMMARY OF 2024 PROGRESS

For a detailed map of the locations referenced in this email, see the [Hwy 3 Twinning Map](#).

Highway Construction

- Topsoil stripping complete from Taber to RR 151, and RR 150 to RR 140
- Subgrade complete from Taber to RR 153, RR 150 to 143, and RR 142 to 140
- Removal of field approaches complete from Taber to RR 154
- Gravel complete from Taber to RR 155
- Paving base lift and first top lift complete from RR 163 to 155
- Gravel and asphalt aggregate crushing complete
- Culvert bores under existing highway complete at RR 163, 162, 161, 155, and south of Burdett
- Detour 1 between Taber and RR 163 complete

Utilities

- Fiber Optic relocations complete from Taber to Grassy Lake
- ATCO pipeline lowerings complete
- Forty Mile Gas pipeline lowerings 90% complete
- Fortis power pole relocations complete between Taber and Grassy Lake

St. Mary River Irrigation District (SMRID)

- Lateral 5-4 pipeline cap complete
- Lateral 7 East Horsefly casing complete
- Lateral 17 culvert and pipeline casing complete
- Lateral 18 casing complete
- Lateral 20 pipeline cut back and casing complete
- Private pipeline casing complete
- Structure 1-2 partially complete with the culverts installed under the new EB lanes
- Structures 3, 4, 5, and 6 complete
- Structure 7-8 partially complete with the culverts installed under the new EB lanes



To subscribe to the email list, please click [here](#).

Thank you for your interest in the Highway 3 Twinning Project. For more information, please contact us at hw3twinning@ledcor.com or visit the [Highway 3 Twinning webpage](#).

To unsubscribe from the email list, please click [here](#).

[Back to the top](#)



Ledcor Highways Ltd.