

HIGHWAY 3 TWINNING PROJECT UPDATE: TABER TO BURDETT

November 1, 2025

[PROJECT OVERVIEW](#) | [OBJECTIVE](#) | [FAST FACTS](#) | [TRAFFIC DETOURS](#) | [TRAFFIC IMPACTS](#) | [SUMMARY OF 2025 PROGRESS](#) | [CURRENT WORKS](#) | [LOOK AHEAD](#) | [OCTOBER 2025 PROGRESS PHOTOS](#) | [SUMMARY OF 2024 PROGRESS](#)

PROJECT OVERVIEW

OBJECTIVE

The twinning of Highway 3 will expand the highway's capacity, enhance safety, accommodate future growth, support economic development in Southern Alberta, and increase the efficient movement of goods and people.

Work on this section of the highway involves twinning a 54 km stretch from Taber to Burdett including building an 8 km, new four-lane divided highway bypassing Grassy Lake. It includes:

- 11 bridge-sized structures
- Intersection improvements
 - Acceleration/deceleration lanes
 - Intersection widening
- 2 rest area pullouts – one westbound and one eastbound
- 10 service roads
- 1 bulk water fill station relocation

FAST FACTS

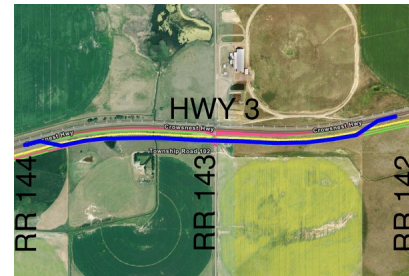
- 2,813,400 cubic meters of grading work
- 1,044,300 tonnes of granular base
- 475,000 tonnes of asphalt concrete pavement
- 802 new signs
- 38 km of fencing
- 30 new streetlight installation

This project is anticipated to be completed in Fall, 2026.

TRAFFIC DETOURS

Curve Realignment Detour

- Detour was opened on **September 10th** and is expected to be in place until **May 2026**.
- Traffic will be detoured on to the new Highway 3 alignment between RR 144 and RR 142.



TRAFFIC IMPACTS

- Hwy 877 speed reduction will be in place for the remainder of the Project as the New Highway 3 intersection takes priority.
- RR 132 will remain closed until summer 2026.
- Truck haul is ongoing, expect trucks turning at RR 135 and 134.

SUMMARY OF 2025 PROGRESS

For a detailed map of the locations referenced in this email, see the [Hwy 3 Twinning Map](#).

Grading

- Topsoil placement and seeding completed from RR 163 to RR 155
- Topsoil stripping completed from Taber to RR 125 and RR 124 to 121
- Final subgrade prep completed from RR 154 to RR 131
- Borrow reclamation completed east of RR 143
- HWY 877 intersection completed

Gravel

- Mainline gravel base course completed from RR 154 to RR 132.

Paving

- Detour between RR 144 and 142 completed
- 1st and 2nd lift paving completed from RR 154 to RR 135

- 1st lift completed in bypass from RR 135 to HWY 877

Utilities

- ATCO High Pressure pipeline abandonment completed
- AltaLink major pole relocation at RR 153, 122 and HWY 877 completed
- Private waterline lowering completed in bypass
- Forty Mile Gas lowering's completed
- Fortis power pole relocation at HWY 877 and RR 150 intersection completed
- Enmax fiber lowering completed at RR 153
- IPL wall thickness completed west of RR 154

SMRID

- Bridge sized culvert structures 1-2, 8, and 9-10 completed
- Laterals 3/3A, 8, 9, and East Horsefly Main Pipeline completed
- Structure 11 concrete box culvert fabrication completed

Other

- Highway 3 Twinning web page has been completed [click here](#)
- Saw cutting on south side of existing Highway 3 completed
- Detour east of Taber completed
- Culvert bores under existing Highway 3 complete at RR 152 intersection

CURRENT WORKS

Grading

- Topsoil placement in various locations
- Topsoil stripping from RR 125 moving east
- Grading ongoing from RR 130 moving east and from RR 124 to 122 moving east
- Final subgrade prep, intersection improvements, and culvert installations ongoing from RR 131 moving east.
- Curve realignment work on existing Highway 3 is ongoing from RR 144 to 142.

Gravel

- Finished for 2025 construction season

Paving

- Paving crews working from HWY 877 to RR 132
- HWY 877 intersection tie-in

Utilities

- SMRID Pre-cast box culvert installation, ongoing
- AltaLink completing pole relocations west of curve realignment detour

LOOK AHEAD

- MD of Taber waterline in bypass to begin construction
- Continue subgrade work from RR 131 moving east and curve realignment from RR 143 to 142.
- Miscellaneous topsoil placement, culvert installations, and clean up
- Finish paving up to RR 132 EB and WB traveling lanes for winter shutdown

OCTOBER 2025 PROGRESS PHOTOS



Crews Installing Precast Box Culvert on SMRID Channel Between RR 131 and 132
Looking East



Crews Installing Bridge Sized Culvert on Curve Realignment Between RR 142 and 143 Looking West



Base Crews Working on HWY 877 Intersection South of Grassy Lake Looking South



Grading Crews Working on East Grassy Detour Leg at RR 132 Looking East



Grading Crews Completing Median Ditch Cuts West of Burdett Looking East



Paving Crews Working on 2nd Lift of Asphalt Between RR 135 and 134 Looking West

Photo Credits: Ledcor Highways Ltd.

SUMMARY OF 2024 PROGRESS

For a detailed map of the locations referenced in this email, see the [Hwy 3 Twinning Map](#).

Highway Construction

- Topsoil stripping complete from Taber to RR 151, and RR 150 to RR 140
- Subgrade complete from Taber to RR 153, RR 150 to 143, and RR 142 to 140
- Removal of field approaches complete from Taber to RR 154
- Gravel complete from Taber to RR 155
- Paving base lift and first top lift complete from RR 163 to 155
- Gravel and asphalt aggregate crushing complete
- Culvert bores under existing highway complete at RR 163, 162, 161, 155, and south of Burdett

- Detour 1 between Taber and RR 163 complete

Utilities

- Fiber Optic relocations complete from Taber to Grassy Lake
- ATCO pipeline lowerings complete
- Forty Mile Gas pipeline lowerings 90% complete
- Fortis power pole relocations complete between Taber and Grassy Lake

St. Mary River Irrigation District (SMRID)

- Lateral 5-4 pipeline cap complete
- Lateral 7 East Horsefly casing complete
- Lateral 17 culvert and pipeline casing complete
- Lateral 18 casing complete
- Lateral 20 pipeline cut back and casing complete
- Private pipeline casing complete
- Structure 1-2 partially complete with the culverts installed under the new EB lanes
- Structures 3, 4, 5, and 6 complete
- Structure 7-8 partially complete with the culverts installed under the new EB lanes



To subscribe to the email list, please click [here](#).

Thank you for your interest in the Highway 3 Twinning Project. For more information, please contact us at hw3twinning@ledcor.com or visit the [Highway 3 Twinning webpage](#).

To unsubscribe from the email list, please click [here](#).

[Back to the top](#)



Ledcor Highways Ltd.