

HIGHWAY 3 TWINNING PROJECT UPDATE: TABER TO BURDETT

December 5, 2025

[PROJECT OVERVIEW](#) | [OBJECTIVE](#) | [FAST FACTS](#) | [TRAFFIC IMPACTS](#) |
[PROGRESS TO DATE](#) | [WINTER LOOK AHEAD](#) | [PROJECT OVERVIEW PHOTOS](#) |
[2026 FINAL CONSTRUCTION SEASON LOOK AHEAD](#)

PROJECT OVERVIEW

OBJECTIVE

The twinning of Highway 3 will expand the highway's capacity, enhance safety, accommodate future growth, support economic development in Southern Alberta, and increase the efficient movement of goods and people.

Work on this section of the highway involves twinning a 54 km stretch from Taber to Burdett including building an 8 km, new four-lane divided highway bypassing Grassy Lake. It includes:

- 11 bridge-sized structures
- Intersection improvements
 - Acceleration/deceleration lanes
 - Intersection widening
- 2 rest area pullouts – one westbound and one eastbound
- 10 service roads
- 1 bulk water fill station relocation

FAST FACTS

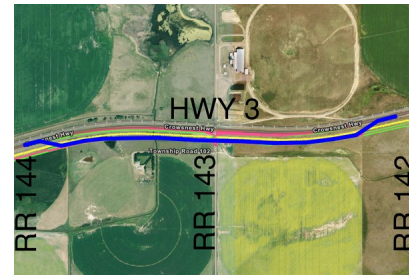
- 2,813,400 cubic meters of grading work
- 1,044,300 tonnes of granular base
- 475,000 tonnes of asphalt concrete pavement
- 802 new signs
- 38 km of fencing
- 30 new streetlight installation

This project is anticipated to be completed in Fall, 2026.

TRAFFIC IMPACTS

Curve Realignment Detour

- Detour was opened on **September 10th** and is expected to be in place until **May 2026**.
- Traffic will be detoured on to the new Highway 3 alignment between RR 144 and RR 142.



Speed Reductions and Road Closures

- HWY 877 speed reduction will be in place for the remainder of the Project as the New Highway 3 intersection takes priority.
- RR 132 between HWY 3 and TWP 102 will remain closed until summer 2026

PROGRESS TO DATE

For a detailed map of the locations referenced in this email, see the [Hwy 3 Twinning Map](#).

Grading

- **77% completed**
- Topsoil placement and seeding completed from RR 163 to RR 155 and RR 143 to 140.
- Topsoil stripping completed from Taber to RR 121.
- Final subgrade completed from RR 163 to RR 132 and curve realignment detour between RR 144 and RR 142.
- Rough grading complete from RR 132 to RR 121.
- Borrow reclamation completed east of RR 143.

Gravel

- **70% completed**
- Mainline gravel base course completed from RR 163 to RR 132.

Paving

- **46% completed**

- 1st and 2nd lift paving completed from RR 163 to RR 132.

Utilities

- **95% completed**
- ATCO (5) LP lowering's and (3) HP crossings completed.
- Forty Mile Gas (8) lowering's completed.
- Private waterline (2) lowering's completed.
- MD of Taber Grassy Lake Main Waterline (1) Lowering completed.
- AltaLink (4) major pole relocations completed.
- Fortis power (~28km) relocations and underground power lowering's at intersections completed.
- TELUS and ZAYO (~46km) communication relocations completed.
- Enmax Fiber (1) lowering completed.
- IPL (1) wall thickness upgrading completed.

SMRID

- **100% Completed**
- SMRID Bridge Structures (11) completed.
- SMRID Pipelines and Laterals (10) completed

Other

- Highway 3 Twinning web page has been completed [click here](#)
- Detour east of Taber completed.
- Detour between RR 143 and RR 142 is currently in place.
- Culvert bores (6) under existing Highway 3 completed.

WINTER LOOK AHEAD

- Traffic detour maintenance between RR 144 to RR 142.
- Miscellaneous topsoil placement from RR 155 to RR 143 and RR 140 to RR 121.
- Ongoing site cleanup and maintenance
- Burdett storm pond
- Electrical and lighting work

PROJECT OVERVIEW PHOTOS



Crews Installing Twin 3.6m Culverts with Concrete Headwall East of Taber on Temporary Detour



Grading Crews Completing Major HWY 877 Intersection Improvements South of Grassy Lake Detouring Traffic on RR 134.



Crews Crushing 1.5M Tonnes of Aggregates



Milling Existing HWY 3 Curve Realignment Adjacent to Traffic Detour Between RR 144 and RR 142



Grading Crews Working on Borrow Pit Southeast of RR 143



Crews Installing SMRID Casing and Dewatering Wellpoints at Purple Springs



Crews Paving 1st lift from RR 141 to RR 140.



Base Crews Laying out 2nd Lift Windrows Between RR 134 and HWY 877 WBL
in the Bypass



Crews Rough Grading in Bypass Between HWY 877 and RR 132



Crews Installing Precast Box Structure with 160 Tonne Crane Between RR 131
and RR 130



Base Crews Compacting 1st Lift Between RR 153 and RR 152



Paving Crews Placing 2nd Lift Between HWY 877 and RR 132 in the Bypass

Photo Credits: Ledcor Highways Ltd.

2026 FINAL CONSTRUCTION SEASON LOOK AHEAD

Grading

- Topsoil placement and seeding completion from RR 155 to RR 143 and RR 140 to RR 121.
- Final subgrade completion from RR 132 to RR 121.
- Final subgrade tie-ins in Taber, west/east side of Grassy Lake, and Burdett.
- Detour obliterations at Taber, RR 143, and RR 132.
- Existing passing lane removals at RR 141, and RR 130.
- Service road and private driveway completion on north/south side of HWY 3.
- North side intersection improvement at RR 150 and rest area at RR 151.
- New field access installs and removals.
- Burdett storm pond completion.

Gravel

- Placing base course on RR 144 to RR 142 curve realignment.

- Base course completion from RR 132 to RR 121.
- Miscellaneous base course tie-in work at RR intersection, service roads, and driveways.

Paving

- Paving RR 144 to RR 142 curve realignment.
- Paving completion from RR 132 to RR 121.
- Paving final 3rd lift from RR 163 to RR 132.
- Milling intersection tie-ins from RR 163 to 121.

Utilities

- MD of Forty Mile Burdett Bulk Water Fill Station Relocation.

Other

- HWY 36 concrete median obliteration and relocation.
- Lighting and Electrical work in 14 locations.
- New sign installs and relocations.
- Line, message painting, and rumble strips.

Traffic availability

- The new eastbound lanes and the Grassy Lake bypass are scheduled to open to public traffic on October 1, 2026. Miscellaneous site cleanup and service road work will continue after this date with minimal impact to four lane traffic.



To subscribe to the email list, please click [here](#).

Thank you for your interest in the Highway 3 Twinning Project. For more information, please contact us at hw3twinning@ledcor.com or visit the [Highway 3 Twinning webpage](#).

To unsubscribe from the email list, please click [here](#).

[Back to the top](#)



Ledcor Highways Ltd.

